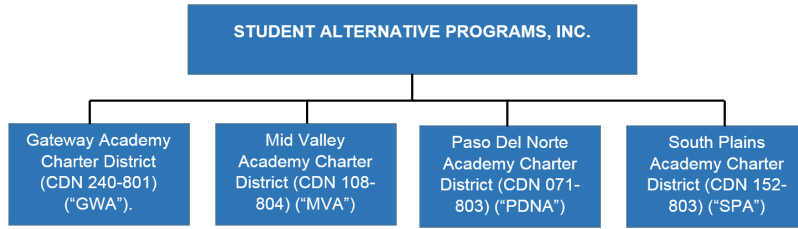


**Attachment B**

**SAPI Charters Current Account Structure**

The district presently maintains accounts as listed below. The district reserves the right to open additional accounts or to close accounts during the term of the depository contract.



<u>Type of Account</u>	Number of Accounts	Interest Bearing/Non-Interest Bearing
<b>General Operating</b>	<b>4</b>	<b>NIB Checking</b>

\*\*\*\*\*

**Current Volumes:**

<u>Type of Account</u>	<u>Average Number Of Items</u>	<u>Average \$ Amount of Items</u>	<u>Unit Bank Charge</u>
Payroll			
Semimonthly checks	20		
Semimonthly direct deposit	850		
Monthly payroll		\$400,000	
Accounts Payable			
Monthly checks or payments	1,000	\$500,000	
Deposits			
Monthly deposits	40		
Student Activity (Number of accounts)			
High School	4		

**DESIRED ACCOUNT STRUCTURE**

<u>Type of Account</u>	<u>Number of Accounts</u>	<u>Description of Accounts</u>
Master Account	1	General Operating
Controlled Disbursement	4	Payroll
	4	Accounts Payable
Depository Plus Accounts	4	Activity Funds
Positive Pay	4	Payroll, Accounts Payable
Checking	4	General Operating